



GAT MONTHLY MEMBERSHIP PROGRESS REPORT

Results as of: 10/31/2022

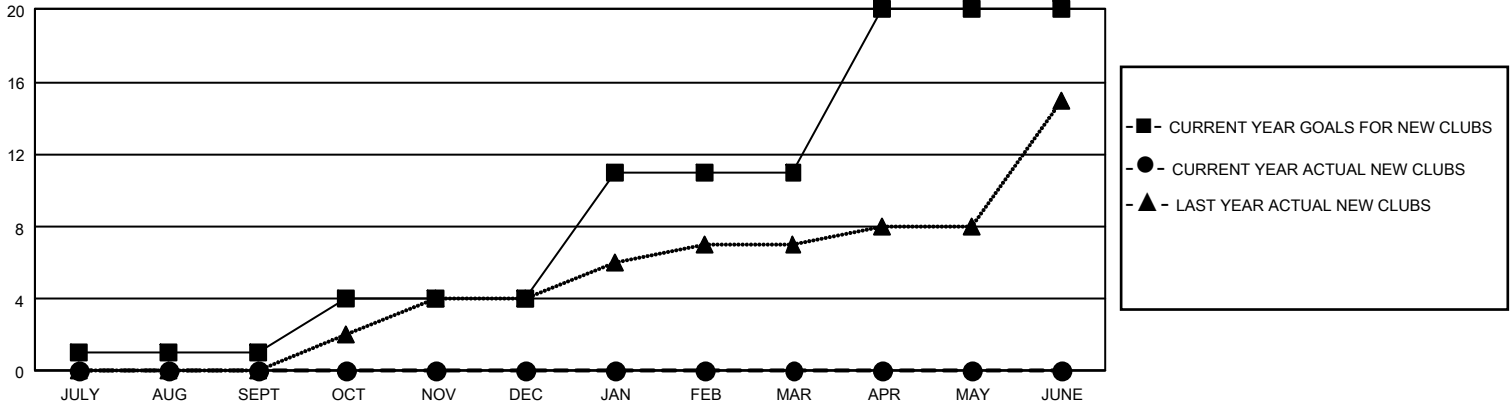
GMT Constitutional Area 3, Group H

REPORT DOES NOT INCLUDE CLUBS IN UNDISTRICTED AREAS.

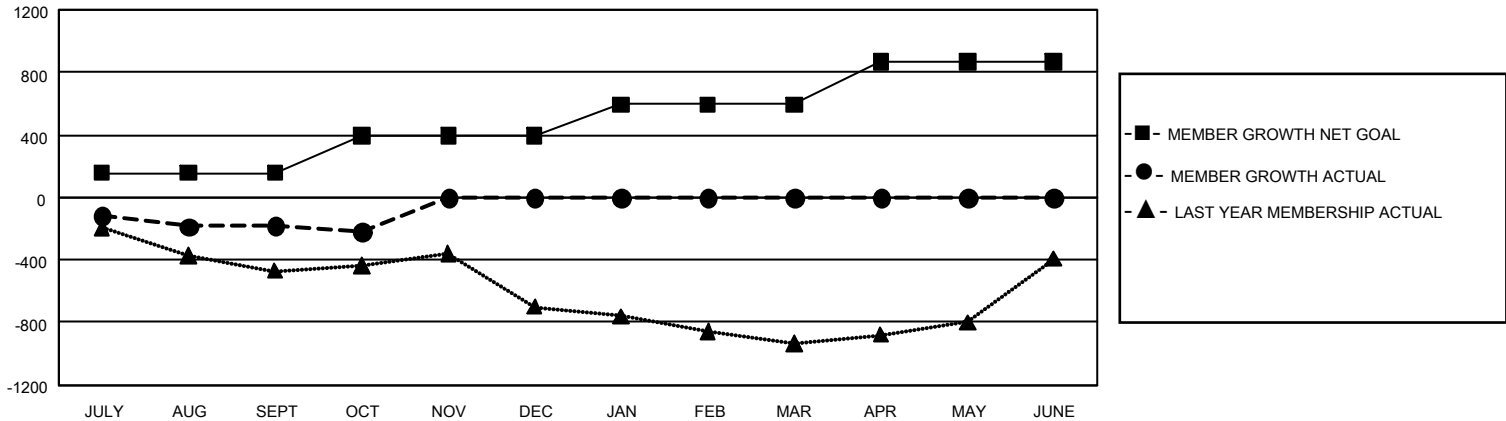
Clubs			
RESULTS FOR 2022-2023			
QUARTER	NEW CLUB GOAL	NEW CLUBS	DROPPED CLUBS
JULY/AUG/SEPT	3	0	2
OCT/NOV/DEC	9	0	0
JAN/FEB/MAR	21	0	0
APR/MAY/JUNE	27	0	0

Members			
RESULTS FOR 2022-2023			
QUARTER	MEMBER GROWTH NET GOAL	MEMBER GROWTH ACTUAL	DROPPED MEMBERS ACTUAL (including transfers)
JULY/AUG/SEPT	155	275	435
OCT/NOV/DEC	240	121	147
JAN/FEB/MAR	200	0	0
APR/MAY/JUNE	275	0	0

GOALS AND ACTUAL NEW CLUBS CUMULATIVE



GOALS AND ACTUAL MEMBERS CUMULATIVE



DROPPED CLUBS: 2 DROPPED MEMBERS DECEASED 44 CLUB CANCELLED 0 OTHER 539 TOTAL 583	128 CLUBS OF 491 ADDED 1 OR MORE NEW MEMBERS	GENDER DISTRIBUTION MALE 7,258 (49.78%) FEMALE 7,317 (50.18%) NON BINARY 0 (0.00%) PREFER NOT TO ANSWER 6 (0.04%)
	CLICK HERE FOR CUMULATIVE MEMBERSHIP DATA	TOTAL FAMILY UNIT MEMBERS 7,629 FAMILY MEMBERS PAYING HALF DUES 3,898